

1A Old Haymarket 73-89 Victoria Street, Liverpool, L1 6AF
Tel: 0151 305 2577
Email: liverpoolsales@ascendproperties.com
www.ascendproperties.com

Ascend

Built on higher standards



Longmoor Lane, Liverpool

£660 PCM

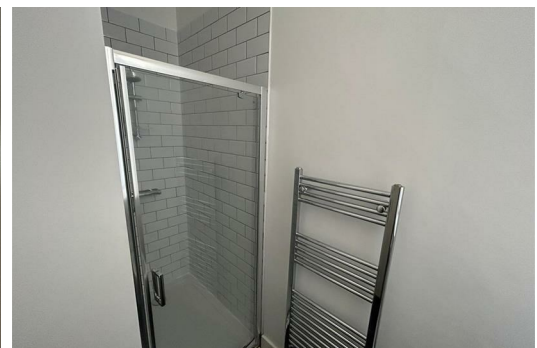
Fancy living in a slice of Liverpool's history just 20 minutes away from the city centre? Don't miss out on this incredibly unique and brand new development in Liverpool. Situated within a beautiful original building, this development of apartments has been given a breath of new life.

The eye-catching exterior is matched by the equally stunning interior and inside you're instantly greeted by a vast entrance hall that features a grand staircase leading to the upper floors.

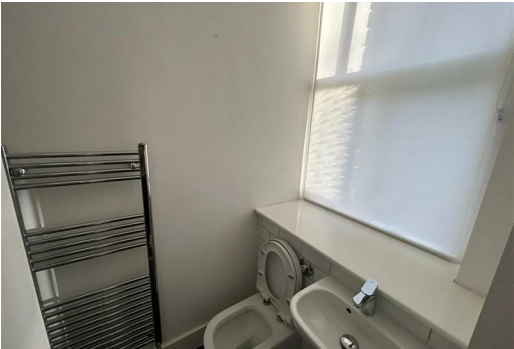
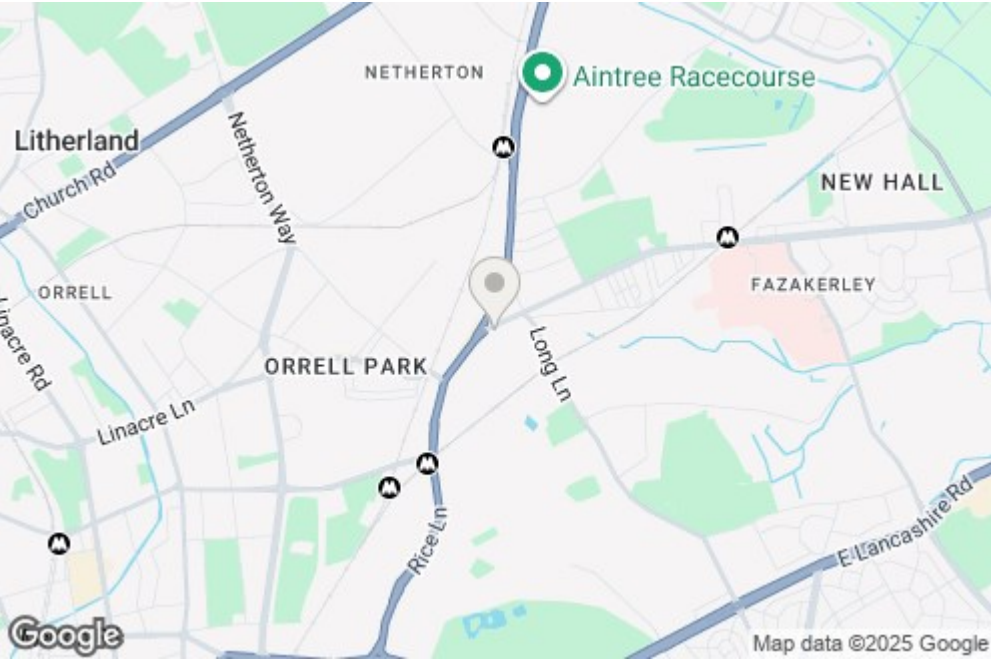
Venture further and you'll discover a bright, airy interior, complete with high ceilings, a neutral design and sleek fixtures and fittings throughout. Here you'll be able to kick back and relax in rooms which boast an incredible amount of space. You can also enjoy a sleek kitchen which comes complete with integrated appliances, a modern tiled bathroom and a plush bedroom which is flooded with natural light.

Situated just minutes away from Aintree racecourse and hospital – these apartments are ideal for those looking for a quiet retreat with easy access to the action of Liverpool city centre. With several parks, schools and amenities just a stone's throw away, you'll have everything you could possibly need within easy reach.

Pictures may Vary for Marketing use only .
Available 15th December 2025
Council Tax Band A
12 month minimum tenancy.
Deposit £760



3, 8 Clock Tower Longmoor Lane, Liverpool, Merseyside, L10 1LD



Energy Efficiency Rating		Score	Band
Very energy efficient - lower running costs			
92-100	A		
81-91	B		
69-80	C		
58-68	D		
49-57	E		
39-48	F		
21-38	G		
Not energy efficient - higher running costs			

Environmental Impact (CO ₂) Rating		Score	Band
Very environmentally friendly - lower CO ₂ emissions			
92-100	A		
81-91	B		
69-80	C		
58-68	D		
49-57	E		
39-48	F		
21-38	G		
Not environmentally friendly - higher CO ₂ emissions			